

## X-6800

### Handheld portable bluetooth+ wireless 2D scanner



#### Product Description

The X-6800 is a mini portable barcode scanner from NETUM, featuring a compact design that's easy to carry.

**Industrial-Grade Appearance:** Rugged, durable industrial design, scratch-resistant and robust, suitable for harsh and complex working environments such as warehouses and factories. It offers a professional look and strong practicality.

**Durable and Drop-Resistant Structure:** Utilizing a dual-color molded soft rubber + hard rubber process, it boasts excellent drop resistance, wear resistance, and scratch resistance. The sides of the device feature textured soft rubber strips to enhance grip and prevent slippage, improving operational stability in complex scenarios.

**Soft Rubber Anti-Slip Buttons:** Equipped with soft rubber buttons, offering a soft and non-slip feel, clear tactile feedback, and reducing hand fatigue during prolonged high-frequency operation.

#### Product Features

**Fast and Accurate Recognition:** Supports high-performance 1D/2D barcode scanning, offering excellent performance even for low-contrast, soiled, or distorted printed barcodes.

**Visualized Battery Indicator:** Built-in battery indicator lights allow for intuitive viewing of remaining battery power, enabling users to plan charging in advance and avoid work interruptions due to power outages, ensuring continuous operation.

**Flexible and Versatile:** Offers three transmission methods: wireless Bluetooth + 2.4G + wired, allowing for seamless switching between multiple devices for greater convenience.

**Rotatable Scanner Design:** The scanner supports flexible multi-angle rotation, allowing for quick barcode alignment without adjusting the device or item's orientation, significantly improving scanning efficiency and ease of operation.

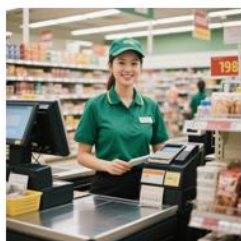
## Application scenarios

**Retail Store Checkout:** Supermarkets, convenience stores, and similar settings require frequent barcode scanning. This portable and lightweight scanner allows cashiers to operate quickly, improving checkout efficiency. Multiple transmission modes (such as Bluetooth) enable rapid connection to the POS system.

**Warehouse Inventory Management:** Warehouses often have dense shelving and complex spaces. The small size of this scanner facilitates movement between shelves. The soft, durable rubber material resists the dust and impacts of the warehouse environment. Its comfortable grip reduces hand fatigue during prolonged inventory checks. Supporting 2.4G/Bluetooth transmission modes, it synchronizes data to the management system in real time. A 1300mAh battery provides sufficient power for continuous inventory checks, eliminating the need for charging and ensuring timely updates.

**Logistics and Courier Delivery:** For couriers, this device is made of modified ABS material with a smooth feel and comfortable grip, reducing fatigue from frequent scanning. Multiple transmission modes adapt to different terminal devices, enabling real-time uploading of logistics data. It ensures continuous pickup and delivery throughout the day, guaranteeing timely updates to logistics information.

**Manufacturing production line:** Portable design facilitates one-handed operation on the production line; soft rubber is wear-resistant and adaptable to complex workshop environments; comfortable grip reduces worker fatigue from prolonged barcode scanning; supports 2.4G/Bluetooth and other transmission modes for stable connection to the production management system; long battery life ensures continuous tracking of product processes on the production line without interruption of data recording.



Supermarket cashier



Warehouse management



Pharmaceutical management



Public service industry



Manufacturing



Express delivery and logistics

## X-6800 Specifications

<b>1</b>	<b>Scanning performance</b>	
1.1	Sensor:	CMOS(Global Shutter)
1.1.2	Resolution:	640×480
1.1.3	Illumination:	White LED
1.1.4	Focus:	Red LED
1.1.5	Reading Accuracy:	1D≥4mil 2D≥5mil
1.1.6	Scanning Angle:	Rotation angle 360°, elevation angle ±55°, deflection angle ±55°
1.1.7	Field of View:	D:48° H:40° V:30°
1.1.8	Supported Code Types:	2D QR Code, Data Matrix, PDF417,Aztec, Maxicode, Hanxin Code 1D EAN,UPC,Code 39,Code 93,Code 128,UCC/EAN 128, Codabar, Interleaved 2 of 5, ITF-6,ITF-14,ISBN,ISSN, MSI-Plessey, GS1 Databar,GS1 Composite Code,Code 11,Industrial 25, Standard 25,Plessey, Matrix 2 of 5
1.1.9	Scanning Depth of Field:	EAN-13 50mm-220mm (13mil) Code 39 40mm-100mm (5mil 10 bytes) QR Code 25mm-240mm (20mil 16 bytes) Data Marix 50mm-100mm (10mil 20 bytes) PDF 417 30mm-140mm (6.67mil 7 bytes)
1.2	Contrast:	≥20%
1.2.1	Scanning method:	Trigger scan, continuous scan, self-sensing scan...
<b>2</b>	<b>Wireless parameters</b>	
2.1	Transmission method:	Wired, 2.4G wireless, Bluetooth (supports protocols 2.0, 3.0, 4.0, 4.2)
2.2	2.4G communication distance:	65m visible viewing distance
	Bluetooth communication distance:	20m visible viewing distance
2.3	Battery capacity:	1000mAh battery
2.4	Charging time:	Approx. 4 hours of use
2.5	Standby time:	Battery lifespan (3 minutes to enter standby)
2.6	Charging input:	5V 1~2A
<b>3</b>	<b>Electrical characteristics</b>	
3.1	Operating voltage:	5V±5%
3.2	Standby current:	0.6μA
3.3	Operating current:	170 mA ±5% (typical), 260 mA ±5% (maximum)
<b>4</b>	<b>Working characteristics</b>	
4.1	Supported Interfaces:	Standard USB interface
4.2	Transmission Method:	2.4G, USB HID (USB COM), Bluetooth (HID, SPP, BLE)
4.3	Prompt Method:	Buzzer, Vibration
4.4	Scanning Method:	Trigger scan*, Continuous scan, Self-sensing scan, Command trigger (etc.)
<b>5</b>	<b>Physical parameters</b>	
5.1	Dimensions (L* W * H) (mm):	Scanner: 190*43*22

5.3	Cable:	Type-C cable length: 1.2m
5.4	Color:	Gray, Yellow
5.5	Shell:	Soft rubber: TPU
<b>6</b>	<b>Safety regulations</b>	
6.1	Anti-fall:	Withstands a 2-meter drop from a concrete surface
6.5	Relevant certifications:	CE, RoHS, FCC, and other certifications.

\*Test conditions: Ambient temperature = 25 °C; Ambient illuminance = 150 lux incandescent lamp; Using NETUM specified test code.